

BISCO ETCHANTS

BISCO etchants are formulated for etching the tooth structure prior to bonding and to be rinsed cleanly, leaving no residue.

Etch-37™ configurations will be discontinued in 2027. We have great alternatives to Etch-37 that are just as effective! Consider Select HV® Etch and Uni-Etch®.

	 Select HV Etch	 Uni-Etch	 Etch-37
Concentration	35%	32%	37%
Semi-Gel or Gel	Gel	Semi-Gel	Semi-Gel
Viscosity	High (Thixotropic)	Low	Low
Color	Blue	Blue	Blue
Bonding Technique	Selective-Etch*	Total-Etch	Total-Etch
Etch Time (Total-Etch or Selective-Etch)	15 Seconds	15 Seconds	15 Seconds
Indirect Restoration Cleaning Time	30 Seconds**	30 Seconds**	30 Seconds**
Easy Wash Off	Yes	Yes	Yes

*Select HV Etch is designed for the selective-etch technique but can be used via total-etch if desired.

**Per the Instructions for Use, 30 seconds if used as a cleaning agent on dental restorative materials. Do not use on Zirconia.

For more information about BISCO products visit:
www.bisco.com • intl@bisco.com

MC-50248ETI Rx Only



ETCHING PATTERN

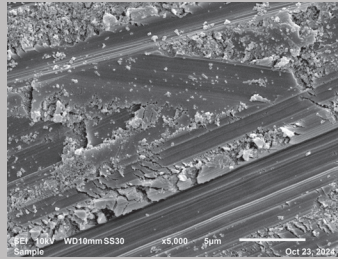
Microscopic images show the etching pattern on enamel and dentin for all BISCO etchants. On enamel, all etchants created micromechanical retention. On dentin, all etchants removed the smear layer and opened the dentinal tubules. The microscopic images reveal that Uni-Etch and Select HV Etch are comparable alternatives to Etch-37.



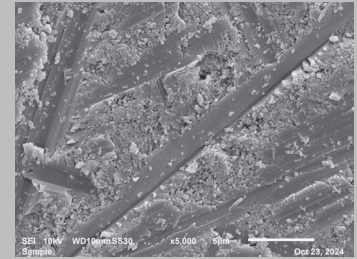
ENAMEL

DENTIN

No Etch

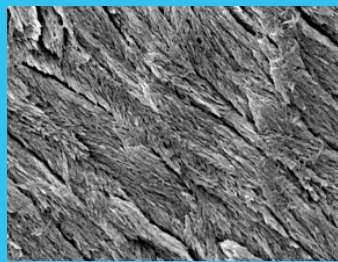


Enamel without etching

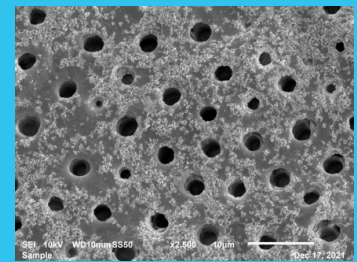


Dentin without etching

Select HV® Etch

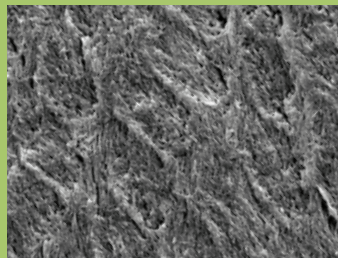


Micromechanical retention on enamel created by Select HV Etch

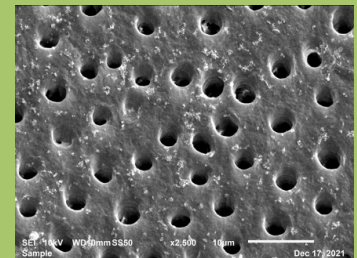


Smear layer removed and opened tubules on dentin created by Select HV Etch

Uni-Etch®

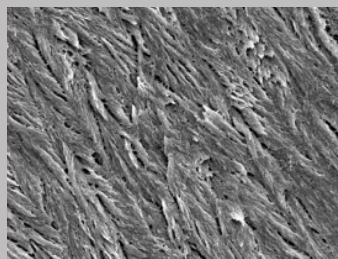


Micromechanical retention on enamel created by Uni-Etch

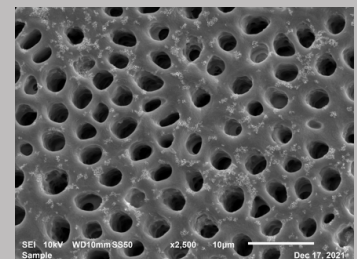


Smear layer removed and opened tubules on dentin created by Uni-Etch

Etch-37™

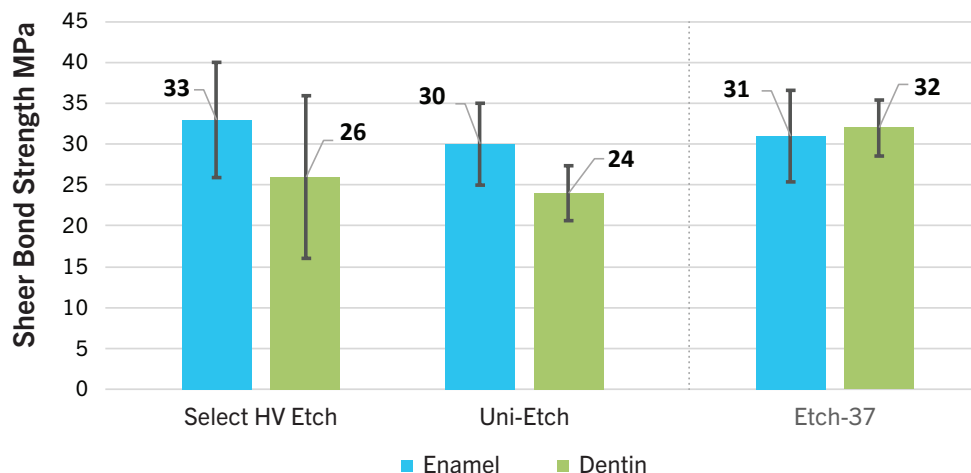


Micromechanical retention on enamel created by Etch-37



Smear layer removed and opened tubules on dentin created by Etch-37

BISCO Etchants: Shear Bond Strength to Dentin & Enamel



All BISCO etchants show equivalent shear bond strength (SBS) to enamel and dentin.¹ The SBS values show that Uni-Etch and Select HV Etch are comparable alternatives to Etch-37.

1. BISCO has data on file

Select HV® Etch (35%)

Select HV Etch Syringe Pack	E-59010P
4 Syringes Select HV Etch (5g ea.), 50 Disposable Syringe Tips, Instructions	
Select HV Etch Bulk Syringe	E-59060P
1 Syringe Select HV Etch (30ml), Instructions	
Select HV Etch Kit	E-59100K
1 Bulk Syringe Select HV Etch (30ml), 30 Disposable Syringes, 30 Disposable Syringe Tips, Instructions	
Select HV Etch Empty Syringe Accessory Pack	X-80580P
30 Disposable Syringes, 30 Disposable Syringe Tips, Instructions	

Uni-Etch® (32%)

Uni-Etch Syringe Pack	E-5502EM
4 Syringes Uni-Etch (5g ea.), 60 Disposable Syringe Tips, Instructions	
Uni-Etch Bulk Bottle	E-5637E
1 Bulk Bottle Uni-Etch (30g), Instructions	
Uni-Etch Syringe	E-5632EM
1 Syringe Uni-Etch (5 g), 15 Disposable Syringe Tips, Instructions	

Accessories

Uni-Etch Light Blue Disposable Tips (25 Gauge)	X-80611N
125 ct. Light Blue Phosphoric Etchant Syringe Tips (25 Gauge) used with Uni-Etch	
Select HV Etch Blue Disposable Tips (22 Gauge)	X-80608N
50 ct. Blue Disposable Syringe Tips (22 Gauge) used with Select HV Etch 5g Syringe	