




BISCO ETCHANTS

BISCO etchants are formulated for etching the tooth structure prior to bonding and to be rinsed cleanly, leaving no residue.

Etch-37™ w/BAC will be discontinued in 2027. We have great alternatives to Etch-37 w/BAC that are just as effective! Consider Select HV® Etch w/BAC and Uni-Etch® w/BAC.

	 Select HV Etch w/BAC	 Uni-Etch w/BAC	 Etch-37 w/BAC
Concentration	35%	32%	37%
Semi-Gel or Gel	Gel	Semi-Gel	Semi-Gel
Viscosity	High (Thixotropic)	Low	Low
Color	Blue	Blue	Blue
BAC	Yes*	Yes*	Yes*
Bonding Technique	Selective-Etch**	Total-Etch	Total-Etch
Etch Time (Total-Etch or Selective-Etch)	15 Seconds	15 Seconds	15 Seconds
Indirect Restoration Cleaning Time	30 Seconds***	30 Seconds***	30 Seconds***
Easy Wash Off	Yes	Yes	Yes

* NOTE: Inclusion of BAC has not been shown to correlate with a reduction in secondary decay in patients. In-vivo clinical studies to evaluate the effects of BAC on oral bacteria or caries have not been performed.

**Select HV Etch w/BAC is designed for the selective-etch technique but can be used via total-etch if desired.

***Per the Instructions for Use, 30 seconds if used as a cleaning agent on dental restorative materials. Do not use on Zirconia.

For more information about BISCO products visit:
www.bisco.com • intl@bisco.com

MC-50247ET Rx Only



ETCHING PATTERN

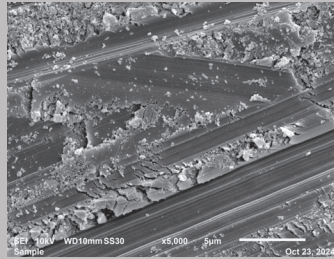
Microscopic images show the etching pattern on enamel and dentin for all BISCO etchants. On enamel, all etchants created micromechanical retention. On dentin, all etchants removed the smear layer and opened the dentinal tubules. The microscopic images reveal that Uni-Etch w/BAC and Select HV Etch w/BAC are comparable alternatives to Etch-37 w/BAC.



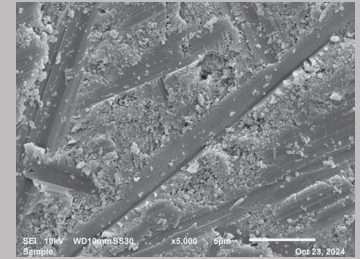
ENAMEL

DENTIN

No Etch

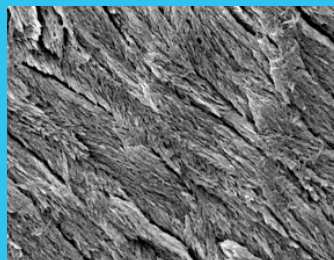


Enamel without etching

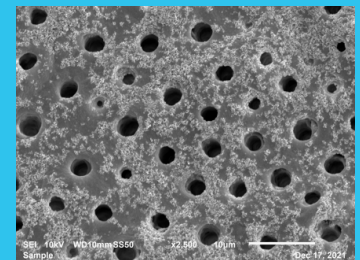


Dentin without etching

Select HV® Etch w/BAC

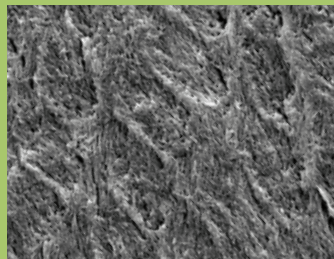


Micromechanical retention on enamel created by Select HV Etch w/BAC

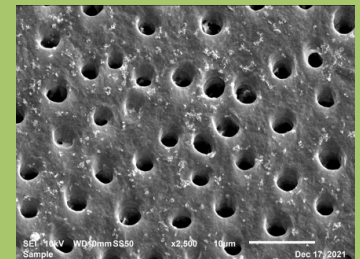


Smear layer removed and opened tubules on dentin created by Select HV Etch w/BAC

Uni-Etch® w/BAC

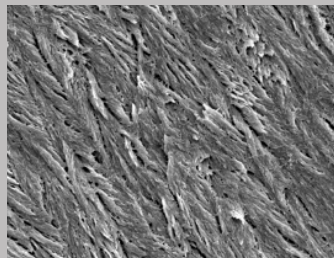


Micromechanical retention on enamel created by Uni-Etch w/BAC

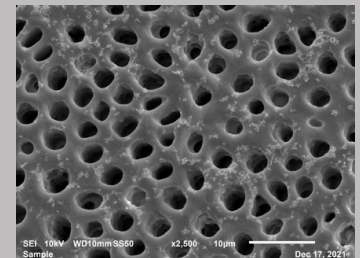


Smear layer removed and opened tubules on dentin created by Uni-Etch w/BAC

Etch-37™ w/BAC

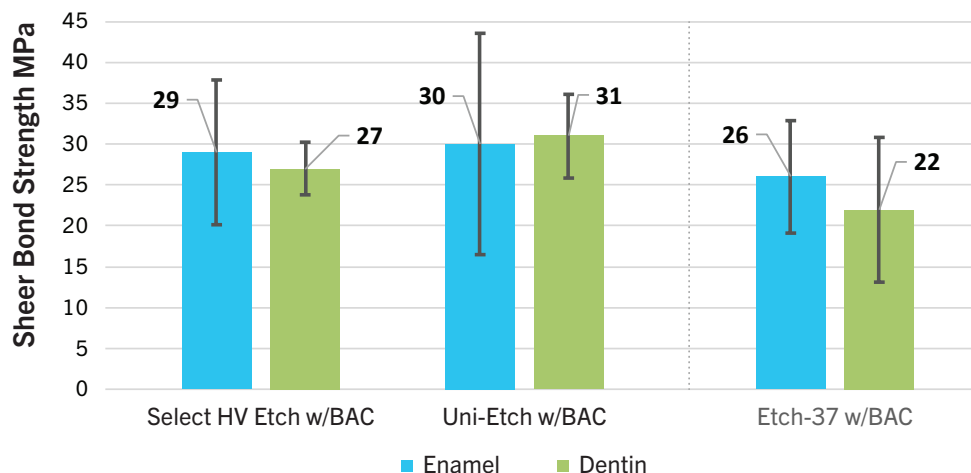


Micromechanical retention on enamel created by Etch-37 w/BAC



Smear layer removed and opened tubules on dentin created by Etch-37 w/BAC

BISCO Etchants: Shear Bond Strength to Dentin & Enamel



All BISCO etchants show equivalent shear bond strength (SBS) to enamel and dentin.¹ The SBS values show that Uni-Etch w/BAC and Select HV Etch w/BAC are comparable alternatives to Etch-37 w/BAC.

1. BISCO has data on file

Select HV® Etch w/BAC (35%)

Select HV Etch w/BAC Syringe Pack	E-59110P
4 Syringes Select HV Etch w/BAC (5g ea.), 50 Disposable Syringe Tips, Instructions	
Select HV Etch w/BAC Bulk Syringe Kit	E-59200K
1 Syringe Select HV Etch w/BAC (30ml), 30 Disposable Syringes, 30 Disposable Tips, Instructions	
Select HV Etch w/BAC Bulk Syringe	E-59160P
1 Bulk Syringe Select HV Etch w/BAC (30ml), Instructions	
Select HV Etch Empty Syringe Accessory Pack	X-80580P
30 Disposable Syringes, 30 Disposable Syringe Tips, Instructions	

Uni-Etch® w/BAC (32%)

Uni-Etch w/BAC Syringe Pack	E-5502EBM
4 Syringes Uni-Etch w/BAC (5g ea.), 60 Disposable Syringe Tips, Instructions	
Uni-Etch w/BAC Bulk Bottle	E-5637EB
1 Bulk Bottle Uni-Etch w/BAC (30g), Instructions	
Uni-Etch w/BAC Bulk Syringe	E-56621P
1 Uni-Etch w/BAC Bulk Syringe (30ml), Instructions	
Uni-Etch Empty Syringe Accessory Pack	X-80582P
30 Disposable Syringes, 30 Disposable Syringe Tips, Instructions	

Accessories

Uni-Etch Light Blue Disposable Tips (25 Gauge)	X-80611N
125 ct. Light Blue Phosphoric Etchant Syringe Tips (25 Gauge) used with Uni-Etch	
Select HV Etch Blue Disposable Tips (22 Gauge)	X-80608N
50 ct. Blue Disposable Syringe Tips (22 Gauge) used with Select HV Etch 5g Syringe	

For more information about BISCO products visit:
www.bisco.com • intl@bisco.com

