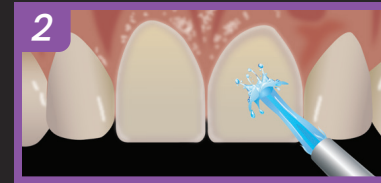


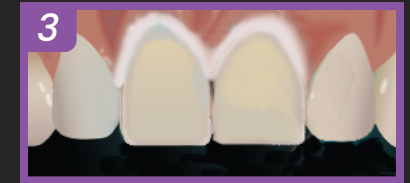
Prepare the internal surface of the restoration as instructed by the laboratory:

A. Etch the veneer with 9.5% Porcelain Etchant for 90 seconds for Feldspathic Porcelain or 15 seconds for Lithium Disilicate (or ensure the restoration has been properly etched by the laboratory). Rinse thoroughly and air dry the restoration.

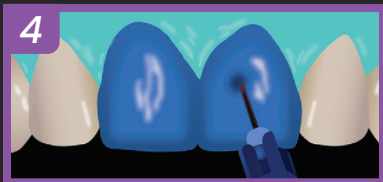
B. Apply 1-2 coats of Bis-Silane™ (mix Parts A and B in a 1:1 ratio) to the internal surface of the restoration, wait for 30 seconds, and dry with warm air.



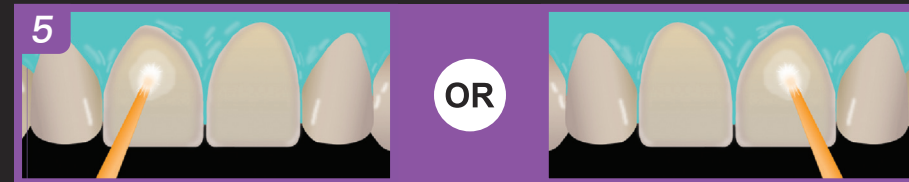
Clean the tooth preparation. Rinse and dry.



Try in the restorations using the water-soluble Choice™ 2 Try-In Paste. Remove the veneers and rinse thoroughly.



Etch the enamel and dentin using Uni-Etch® w/BAC 32% phosphoric acid etchant for 15 seconds. Rinse thoroughly, however, leave the preparation visibly moist.

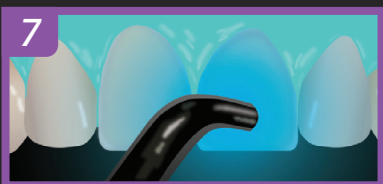


A. Apply two separate coats of All-Bond Universal®, scrubbing the preparation with a microbrush for 10-15 seconds per coat. Do not light cure between coats.

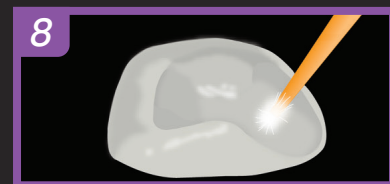
B. Apply 1-2 coats of All-Bond 3® (mix Parts A & B in a 1:1 ratio) to the entire tooth preparation, scrubbing the preparation with a microbrush for 5-10 seconds per coat.



Evaporate excess solvent by thoroughly air-drying for at least 10 seconds; there should be no visible movement of the adhesive. The surface should have a uniform glossy appearance; otherwise, apply an additional coat of All-Bond Universal or All-Bond 3 and air dry.



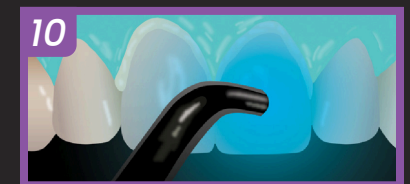
Light cure for 10 seconds.



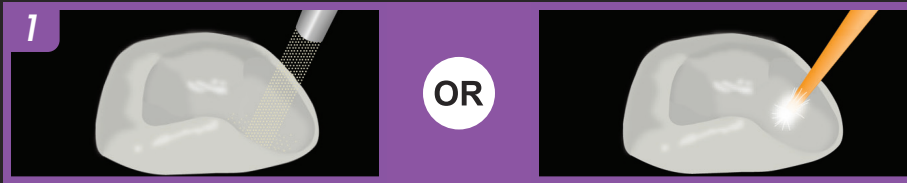
Apply a thin layer of Porcelain Bonding Resin to the internal surface of the veneer. Do not light cure.



Apply a generous amount of the selected shade of Choice™ 2 Veneer Cement to the internal surface of the veneer.



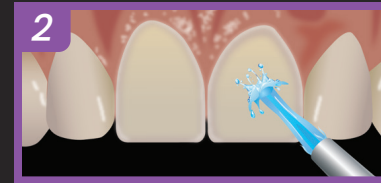
Seat the veneers with gentle pressure and light cure the marginal edge of each restoration for 3-5 seconds. Remove excess cement, then light cure each veneer for 40 seconds from lingual and 40 seconds from the facial.



Prepare the internal surface of the restoration as instructed by the laboratory:

A. Ensure that the veneer has been properly sandblasted or sandblast the internal surface of the veneer according to the manufacturer's instructions.

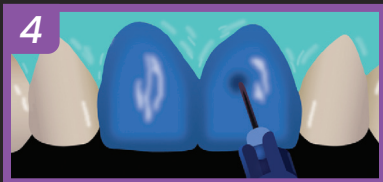
B. Apply 1-2 coats of Z-Prime™ Plus to the intaglio of the restoration and allow for the material to dwell for at least 30 seconds. Air dry.



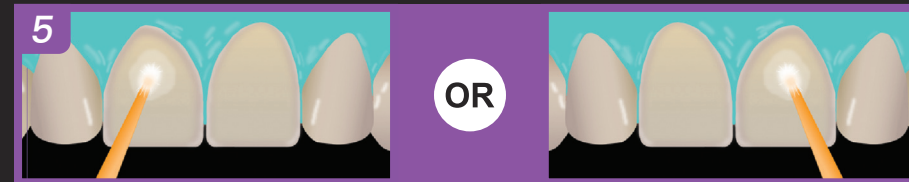
Clean the tooth preparation. Rinse and dry.



Try in the restorations using the water-soluble Choice™ 2 Try-In Paste. Remove the veneers and rinse thoroughly. If the internal surface of the restoration was not pre-treated with Z-Prime™ Plus, decontaminate the surface with ZirClean®, Rinse with water spray and air dry with oil-free air. Then follow step 1B.



Etch the enamel and dentin using Uni-Etch® w/BAC 32% phosphoric acid etchant for 15 seconds. Rinse thoroughly, however, leave the preparation visibly moist.



A. Apply two separate coats of All-Bond Universal®, scrubbing the preparation with a microbrush for 10-15 seconds per coat. Do not light cure between coats.

B. Apply 1-2 coats of All-Bond 3® (mix Parts A & B in a 1:1 ratio) to the entire tooth preparation, scrubbing the preparation with a microbrush for 5-10 seconds per coat.



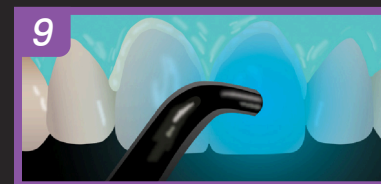
Evaporate excess solvent by thoroughly air-drying for at least 10 seconds; there should be no visible movement of the adhesive. The surface should have a uniform glossy appearance; otherwise, apply an additional coat of All-Bond Universal or All-Bond 3 and air dry.



Light cure for 10 seconds.



Apply a generous amount of the selected shade of Choice™ 2 Veneer Cement to the internal surface of the veneer.



Seat the veneers with gentle pressure and light cure the marginal edge of each restoration for 3-5 seconds. Remove excess cement, then light cure each veneer for 40 seconds from lingual and 40 seconds from the facial.