



Choice² VENEER CEMENT

NEW LOOK.
SAME GREAT CHOICE.



Choice²TM

VENEER CEMENT



YOUR 1ST CHOICE FOR VENEER CEMENTATION

ChoiceTM 2 is a shade stable, light-cured luting cement formulated for the cementation of porcelain, lithium disilicate, zirconia, and composite veneers.

FEATURES AND BENEFITS



Shade Stability

Specifically formulated to not shade shift over time.*



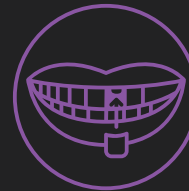
Eight Esthetic Shades

Offered in several VITA[®]** and chromatic shade options for every clinical situation.



Low Film Thickness

Ensures veneer restorations are completely seated.



Compatibility

Compatible with all substrates including porcelain, lithium disilicate (e.max¹), composite, and zirconia.



Easy Clean-Up

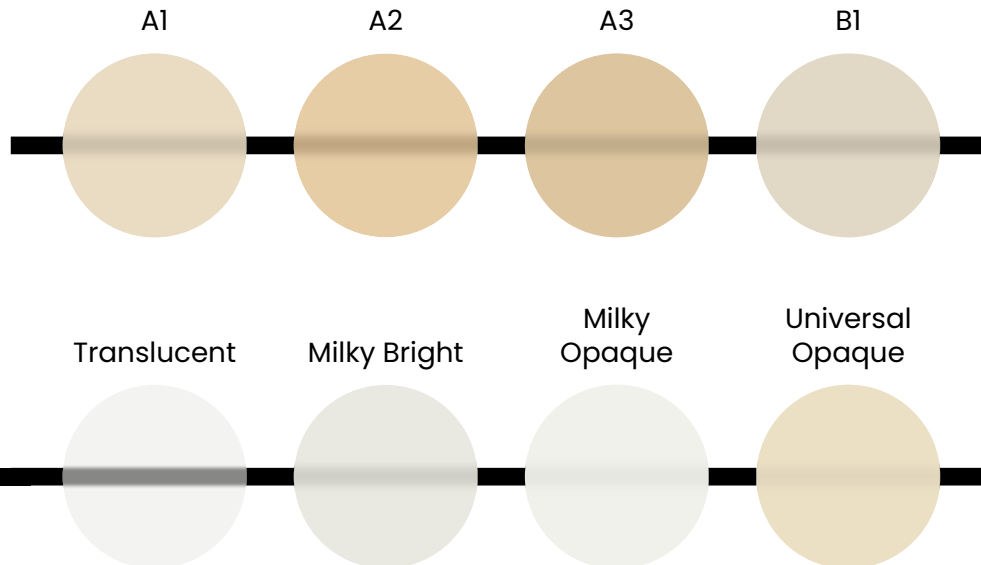
Specifically formulated to allow for quick and easy removal of excess cement.

* Data on file.

** VITA is a registered trademark of VITA ZAHNFABRIK H. Rauter GmbH & Co. KG, Germany.

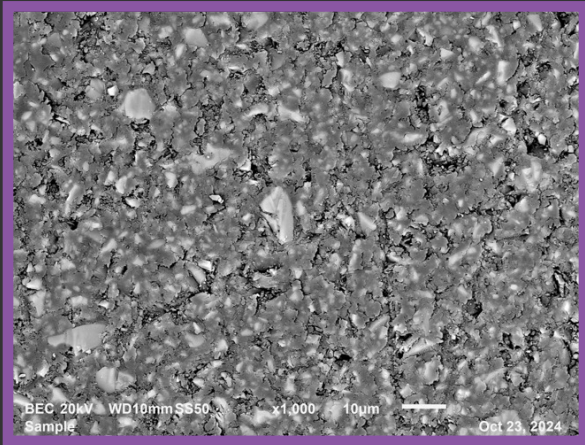
1. IPS e.max is a registered trademark of IVOCCLAR VIVADENT, Inc. There is no sponsorship, affiliation or connection between BISCO, Inc. and IVOCCLAR VIVADENT, Inc.

SHADE GUIDE:



YOUR CHOICE FOR NANOTECHNOLOGY

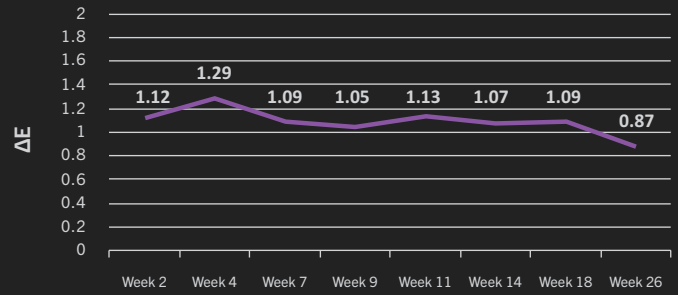
Choice 2 is designed with a resin matrix system enhanced by advanced filler nanotechnology. This highly filled resin cement not only exhibits excellent shade stability, but also significantly reinforces the overall strength of the restoration.



As seen in this SEM photo, Choice 2 fillers are everywhere! The areas highlighted distinctly in white are micron fillers (~10µm in size), whereas the light gray areas are Choice 2's nano fillers, blanketed with a layer of resin material. The use of nanotechnology ensures protection against the substantial pressure and stress veneers endure on a daily basis.

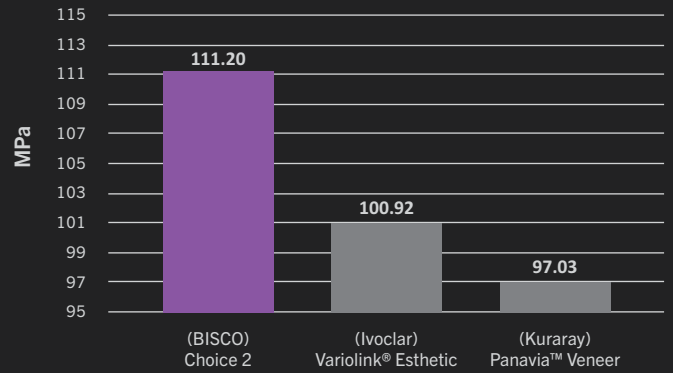


Choice 2 (Milky Bright) - Average Shade Shift (ΔE) in Artificial Saliva at 37°C



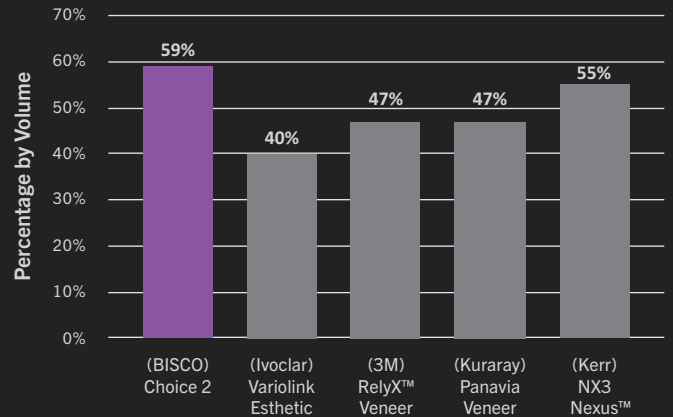
Shade stability is important to ensure a long-lasting, consistent, and esthetically pleasing color match over time.

Flexural Strength



Cements with high flexural strength play a crucial role in maintaining the integrity of veneers over time. By providing enhanced support to the restoration, Choice 2 helps to prevent debonding that could compromise the veneers.

Filler Content



Cements with a high filler content provide reinforcement and strength for the restoration to withstand the biting and chewing forces that veneers endure regularly.

TECHNIQUE STEP-BY-STEP

Step-by-step veneer cementation using Choice 2 on Glass Ceramics



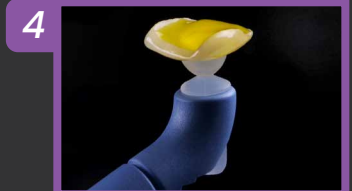
Pre-Op



Etch the preparation with Uni-Etch 32% w/BAC and rinse thoroughly with water.



Apply two separate coats of All-Bond Universal, scrubbing the preparation for 10-15 seconds with a microbrush. Do not light cure between coats.



Etch the internal surface of the veneer with 9.5% Porcelain Etchant (90 seconds for Porcelain, 15 seconds for Lithium Disilicate). Rinse with copious amounts of water and air dry.



Apply Bis-Silane to the internal surface of the veneer and allow to dwell for 30 seconds. Dry with (warm) air syringe.



Optional: Apply a thin layer of Porcelain Bonding Resin to the internal surface of the veneer. Do not light cure.



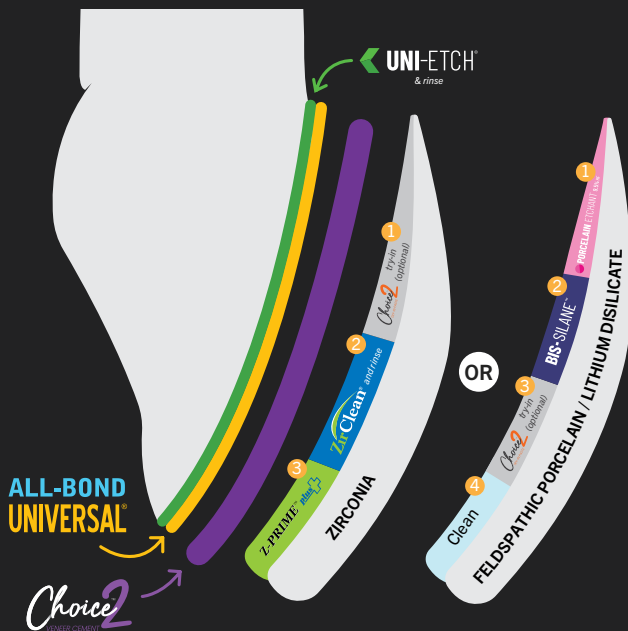
Apply the selected shade of Choice 2 to the internal surface of the veneer.



Seat the final restoration and light cure for 40 seconds.



Final Restoration



VENEER CEMENTATION GUIDE

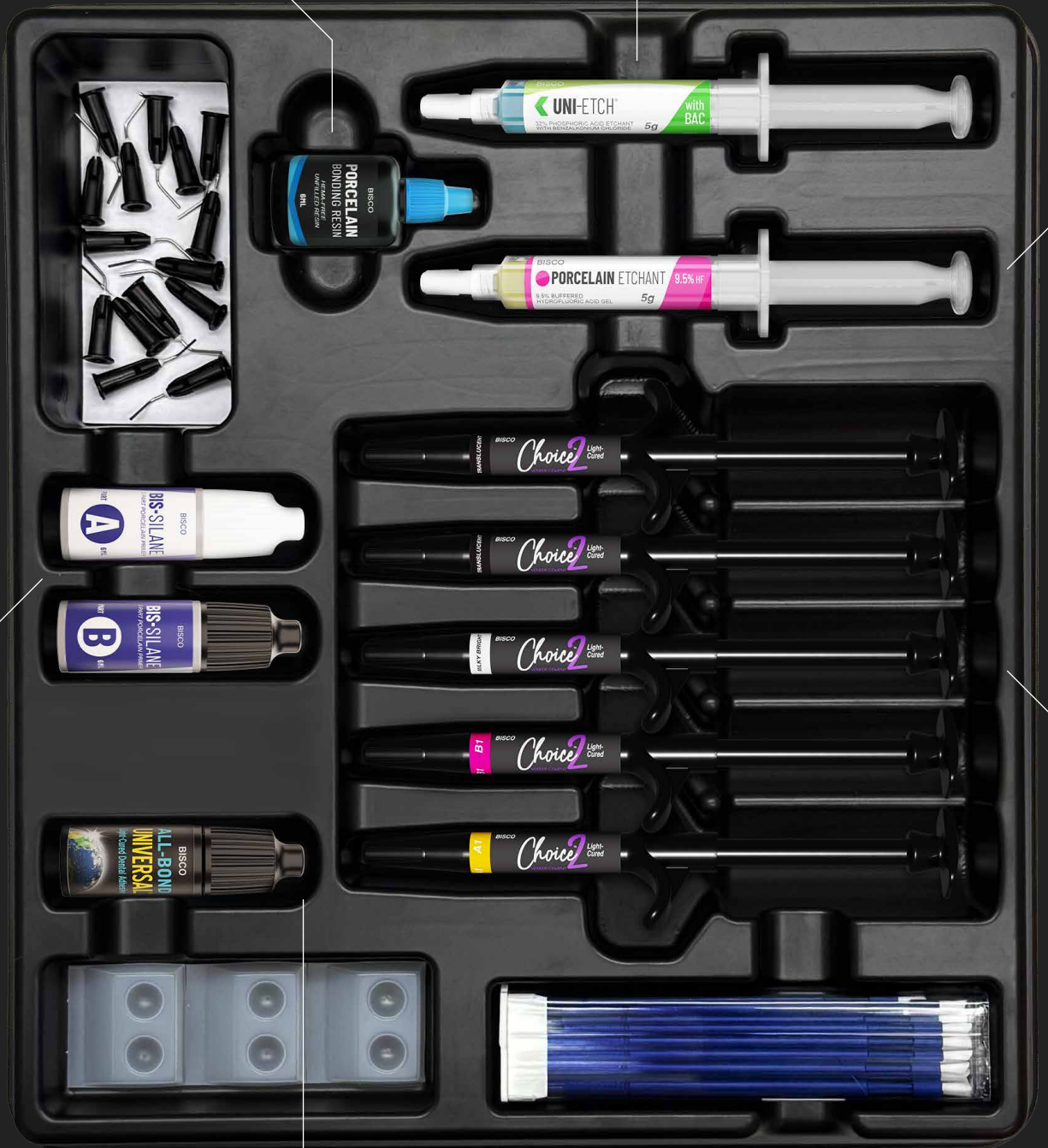
Check out all of the ways to utilize Choice 2! Choice 2, as well as all of the essential products needed to cement porcelain, lithium disilicate (e.max), composite, and zirconia veneers, is showcased as a guide for achieving flawless veneer cementation. Using these products and following these steps is a great choice to achieve esthetic results in all clinical situations.

WHAT'S IN THE KIT?

Porcelain Bonding Resin:
HEMA-free porcelain bonding resin that will act as a wetting agent, allowing the cement to spread in a more uniform layer

Uni-Etch® 32% w/BAC:
32% phosphoric acid semi-gel etchant that is effective at quickly etching enamel and dentin

Porcelain Etchant:
9.5% buffered hydrofluoric acid gel that allows quick and easy etching of all glass ceramic and porcelain substrates



Bis-Silane™:
Two-part silane coupling agent that ensure long-lasting and effective bonding to all glass ceramic and porcelain substrates

All-Bond Universal®:
Universal adhesive that can be used with direct and indirect restorations and is formulated to be compatible with light-, dual- and self-cured materials

Choice™ 2:
Light-cured resin cement specifically designed for the cementation of porcelain, lithium disilicate, zirconia, and indirect composite veneers

ORDERING INFORMATION

Choice 2 Starter Kit with All-Bond Universal C-39010K
 2 Syringes Choice 2 Shade: Translucent (4.5g ea.), 1 Syringe Choice 2 Shade: A1 (4.5g), 1 Syringe Choice 2 Shade: B1 (4.5g), 1 Syringe Choice 2 Shade: Milky Bright (4.5g), 1 Syringe Uni-Etch® w/BAC (5g), 1 Syringe 9.5% Porcelain Etchant (5g), 1 Bottle each Bis-Silane™ Parts A & B (6ml ea.), 1 Bottle All-Bond Universal® (6ml), 1 Bottle Porcelain Bonding Resin (6ml), Accessories, Instructions.



Choice 2 Single Syringes

1 Syringe Choice 2 (4.5g), Instructions.
 A1 C-411A1P
 A2 C-411A2P
 A3 C-411A3P
 B1 C-411B1P
 Translucent..... C-411TRP
 Milky Bright..... C-411MBP
 Milky Opaque C-411MOP
 Universal Opaque C-411OPP

***NEW* Choice 2 Try-In Paste Kit** C-39011K
 1 Syringe Choice 2 Try-In Paste Shade: Translucent (2g), 1 Syringe Choice 2 Try-In Paste Shade: A1 (2g), 1 Syringe Choice 2 Try-In Paste Shade: B1 (2g), 1 Syringe Choice 2 Try-In Paste Shade: Milky Bright (2g), Accessories, Instructions.



Choice 2 Try-In Paste Single Syringes

1 Syringe Choice 2 Try-In Paste (2g), Accessories, Instructions.
 A1 C-412A1P
 A2 C-412A2P
 A3 C-412A3P
 B1 C-412B1P
 Translucent..... C-412TRP
 Milky Bright..... C-412MBP
 Milky Opaque C-412MOP
 Universal Opaque C-412OPP

Call us! We're here to help:
 1-800-247-3368 • www.bisco.com



Rx Only

MC-2043CH