

SELECT HV ETCH

35% Phosphoric Acid Etchant

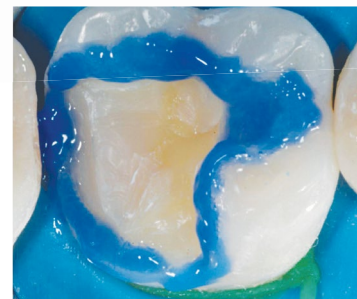


SELECT HV ETCH is a 35% high viscosity phosphoric etch. SELECT HV ETCH is used to condition the tooth structure before bonding adhesives, composites, or sealants. SELECT HV ETCH is specially formulated for maximum working and handling, pin-point placement performance, and eliminating run-on onto the occlusal dentin surface.

- High viscosity, ideal for enamel etching
- Thixotropic
- Blue in color for easy visualization and contrast
- Washes off easily without leaving residue
- Bulk syringe dispensing



SELECT HV ETCH delivers smooth, non-stringy material enabling it to perform well during the "hybrid technique" – etching enamel margins without etching dentin. This is desirable when etching enamel in conjunction with applying a self-etch adhesive, or for the immediate dentin sealing procedure.



SELECT HV ETCH indicating pin point placement on enamel.

Dentistry courtesy of Dr. Michael Morgan

To Order Call: 1-847-534-6000

Like us on:



SELECT HV ETCH

35% Phosphoric Acid Etchant



INDICATIONS FOR USE:

1. Etching dentin and enamel
 - Time: 15 seconds
2. Selective enamel etching
 - Time: 15 seconds
3. Cleaning agent on dental restorative materials
 - Time: 30 seconds

ORDERING INFORMATION

KIT CONTENTS

SELECT HV ETCH	E-59100K
1 Syringe SELECT HV ETCH (30ml), 30 Disposable Syringes, 30 Disposable Tips, Instructions	

REFILLS

SELECT HV ETCH	
1 Bulk Syringe (30ml), Instructions	E-59060P
4 Syringes (5g ea.), 50 Disposable Syringe Tips, Instructions	E-59010P

EMPTY SYRINGE ACCESSORY PACK

30 Disposable Syringes, 30 Disposable Syringe Tips, Instructions	X-80580P
50 Dark Blue Disposable Syringe Tips (22 Gauge)	X-80608N