

Dental **PRODUCT
SHOPPER**

The Perfect Choice for Veneer Cementation

BISCO's Choice 2 veneer cement helps streamline your cementation protocol while providing patients with beautiful, long-lasting results.



Seamlessly Create Powerful Smile Transformations

Combining tried-and-true cements and adhesives like BISCO's Choice 2 and All-Bond Universal with consistent protocols helps ensure smooth veneer cementation.

As Dr. Hugh Flax sees it, placing veneers is the "Super Bowl" of a patient's smile makeover. It takes a lot of time and effort to get to that point, from the initial consult to prep design to placing and adjusting temporaries, and it all comes together during cementation—where everything must be done meticulously for the patient to leave with a successful result.

Missteps can impact esthetics and lead to future problems like microleakage, secondary caries, and even debonding, making it critical to use products you can trust. Dr. Flax, an internationally respected cosmetic dentist based in Atlanta, GA, has for years relied on Choice 2 light-cured veneer cement and All-Bond Universal light-cured adhesive. He likes the firmness of the veneer cement and he knows it will stay exactly where he puts it.

Why Protocols Matter

Dr. Todd Snyder, also a recognized leader in cosmetic dentistry with offices in Laguna Niguel, CA, and Las Vegas, NV, noted that it's also critical for dentists to develop a sound cementation protocol.

"If you want veneers to last as long as possible, you better have a good technique," said Dr. Snyder, who also uses Choice 2 in combination with All-Bond Universal. "I see many patients who had veneers done elsewhere and come in for me to help them. They often have discoloration or stains on the margin in a couple years' time, and I also see them debonding and popping off. For longevity, you need a good protocol and skill set."

Parts of the protocol you develop, such as how long to etch, will depend on the substrate you use. Veneers now come in various material options, including composite



"If you want veneers to last as long as possible, you better have a good technique."

Todd Snyder, DDS, FAACD, FIADFE, FASDA, ABAD

resin, porcelain, lithium disilicate, and zirconia, but each comes with different considerations—and that complicates bonding, said Dr. Rolando Nuñez, BISCO's manager of clinical marketing.

"Bonding to the tooth itself is more common knowledge. Dentists do that every day," Dr. Nuñez said. "But bonding to a specific material requires attention, and if not done properly—if the veneer prep has no retention—it can easily debond or fail quicker than it should. Dentists have to be aware of what they're bonding to."

A Powerful Combination

Choice 2 and All-Bond Universal can be used on any substrate, creating a strong bond and restorations that stand the test of time. To make the procedure seamless, the Choice 2 kit comes with everything you need for cementation, including various shades of Choice 2, Uni-Etch, Bis-Silane, All-Bond Universal, Porcelain Bonding Resin, and Porcelain Etchant.

"Veneers can be very temperamental and are probably the hardest thing to do well in dentistry," said Dr. Ron Kaminer, an international author and lecturer who practices in Long Island, NY. "Having the Choice 2 kit with everything you need to cement means you don't have to run around and start grabbing different materials. The kit comes with the cement and the ancillary products that make things easier in a very difficult procedure."

The Tools & Techniques for Mastering Veneers

Achieving flawless veneer outcomes requires precision, the right materials, and a commitment to preserving tooth structure.

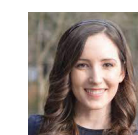
Veneers are extremely powerful for smile enhancement. They can be placed with very little enamel reduction, making them a popular option for patients who are ready to transform their smile. They're also a complex treatment requiring keen attention to detail, from the initial consultation to the cementation appointment.

"It's not as simple as people like to think," Dr. Nuñez said. "It requires clinicians to be thorough when it comes to diagnosis and reaching out to other specialists to achieve the best outcome possible. You are changing a person's smile, and you want to make sure it's done correctly."

Investing in reliable products, like Choice 2 and All-Bond Universal, and developing a consistent technique are keys to success and happy patients.

A Strong, Stable Option

Dentists have relied on Choice 2 for veneer cementation for years. The light-cured resin cement is highly filled, making it extremely strong and very viscous. Unlike other, more flowable resin cements, it stays in place, said Dr. Devin McClintock, adding that this allows her to make adjustments at



"It's more technique sensitive than placing a crown, but the pros outweigh the cons because we're preserving tooth structure."

Devin McClintock, DDS

her own pace in her Williamsburg, VA, practice.

Dr. Gary Radz, a cosmetic dentist in Denver, CO, also likes the cement's viscosity and the fact it's light cure instead of dual cure. It's perfect for his veneer technique, which involves placing multiple veneers at once, and allows for easy cleanup before he cures the cement.

"Some light-cured materials are too thick and make it difficult to fully seat the veneer or feel when the veneer is fully seated," Dr. Radz said. "Some are too runny, so when you go to place the veneer it's a big mess and hard to clean up the

cement because it's just flowing everywhere. Choice 2 is flowable enough, but not too flowable."

The light-cured material also provides additional working time, Dr. Radz said, giving him more confidence in his technique.

With Choice 2, Dr. McClintock doesn't feel like she has to rush through this complex procedure; she has time to make sure everything is as it should be. She takes care to ensure there are no extra pieces of temporary material or cement that could compromise seating, for example, before she places a veneer. It's also easy to clean up.

"You don't want to seat the restoration and it not be in the correct position or have a margin open where bacteria could get in or the patient could pop off the veneer," she said. "It's more technique sensitive than placing a crown, but the pros outweigh the cons because we're preserving tooth structure. It's more meticulous work, but we're saving more tooth in the end and still getting patients the esthetic results they're looking for."

Shade stability is also a key consideration for veneers, and with its advanced formulation and carefully selected components, Choice 2 is designed to minimize color change over time. Not having to worry about a color shift is one of the main reasons Dr. Snyder said he's stayed loyal to Choice 2 for so many years.

The Translucent shade doesn't interfere with the underlying color of the tooth, Dr. McClintock said.

"I prefer to not have the color modified by the cement if I can," she said. "There are some cases where a tinted cement is beneficial, but I try to work with my lab tech to get the color right from the beginning."

Creating a Strong Bond

While there are various systems available, including total-etch and self-etch options, All-Bond Universal is the perfect match for Choice 2.

Veneers have no retention on their own, Dr. Radz said, so clinicians must create it during cementation. Choice 2 and All-Bond Universal are designed to work together to create that all-important bond.

"The bond strength is everything



"The Choice 2 try-in pastes give you an opportunity to see what the veneers will look like with the actual cement without cementing the veneers into place. That's critical."

Gary Radz, DDS

when it comes to longevity," he said. "The only retention is the strength of the bond."

The single-bottle system is also less technique sensitive, Dr. Flax noted, and is compatible with any etching technique or cement. It bonds to all substrates and streamlines veneer placement as well as other procedures.

"I love that All-Bond Universal can be used for pretty much any situation and it's the same protocol," Dr. McClintock said. "You're not introducing a ton of different systems for every case. It's very consistent across the board, which makes it easier for



my assistant to stay on top of what comes in what order."

The Clinical Workflow

Dr. McClintock approaches every veneer case "with the end in mind," collecting all the necessary photos and details at the records appointment and forwarding it all to her lab. A wax-up is created and the patient brought in again for the prep visit, where old dentistry is removed and a mockup placed over the existing dentition.

Once she's happy with the prep design, Dr. McClintock takes an impression to send to the lab. Patients go home with the provisionals designed from the wax-up and know exactly what to expect from the final restorations.

Patients return after wearing the

CHOICE 2 BENEFITS AT A GLANCE

- Highly filled resin enhances restoration strength
- Formulated for color stability
- Stands up to significant pressure and stress
- Low film thickness
- Try-in pastes facilitate shade selection before cementation
- Easy to handle and stays where you put it
- Light cured, allowing for easy cleanup and enabling clinicians to work at their own pace
- Multiple shades available to ensure the final restoration looks natural

temporaries for a week. Dr. McClintock wants to make sure they're happy with how their veneers look and feel. If any adjustments are made, she sends updated scans to the lab for the final restorations.

When veneers come back to Dr. Snyder's office, he checks them carefully so any needed adjustments can be made before the patient is back in the chair. At the try-in appointment, he uses the Choice 2 try-in pastes, which correspond to specific cement shades in the kit, giving him a good idea of how the final restoration will look.

The kit comes with many color options, which Dr. Radz said is a huge benefit. If it's apparent the original cement isn't right after the try-in, you can alter the color and still deliver the veneer that day.

"With veneers, you always want to try them in before cementation because you want to check the fit and esthetics," Dr. Radz said. "The Choice 2 try-in pastes give you an opportunity to see what the veneers will look like with the actual cement without cementing the veneers into place. That's critical."

The paste also rinses away easily, Dr. Snyder noted, so you can quickly begin cementation once the patient is happy with the veneers.

The Cementation Process

After evaluating fit and esthetics, Dr. Kaminer cleans the veneers with BISCO's non-abrasive zirconia/metal cleanser, ZirClean, to remove any impurities from the surface. He then isolates the preparation—a key part of the procedure as contamination can negatively impact veneers.

If blood mixes with the cement, for example, it can turn a veneer pink and weaken the bond. Keeping the field dry and sterile is "the most critical factor for longevity," Dr. McClintock said.

A SHADE FOR EVERY PATIENT

A multitude of shades ensures the final restoration blends well and is natural looking. Shades include:

A1, A2, A3, B1, Translucent, Universal Opaque, Milky Opaque and Milky Bright

Once isolation is achieved, the prep should be cleaned, etched or sandblasted (depending on the substrate), and conditioned with silane or primer before All-Bond Universal is placed and cured. Once that step is complete, veneers can be pressed into place with Choice 2.

Some clinicians place one veneer at a time, while others place multiple. Floss can be used to help remove excess cement. Whatever protocol is chosen, BISCO recommends tack curing excess

cement for 3 to 5 seconds to facilitate cleanup, Dr. Nuñez said. After ensuring you're working in a clean environment, the cement should be light cured for 40 seconds on both sides.

"Once the veneers are light cured, we'll take polishing diamonds and clean up excess cement at the margin and on the lingual," Dr. Kaminer said. "We'll check the occlusion and adjust that as well, then we should be finished."

A Product You Can Trust

Choice 2 has become a mainstay in many practices over the years. Clinicians who use the cement like its strength and esthetics, how it feels in their hands, its shade stability, and how easy it is to clean up. It's a product they've come to rely on to ensure patients leave their office with a beautiful, long-lasting new smile.

"It just works really well," Dr. McClintock said, "and has given me some of my best results."

TIPS FOR VENEER CEMENTATION SUCCESS

Clinicians give their advice on achieving the best results.

Verify the fit of each restoration. Once the veneers are cemented in place, it's too late. Make sure the veneers achieve a passive fit and that the patient is happy. Choice 2 try-in pastes help to verify the fit of each veneer.

"You have to ensure the exact fit of the veneer," Dr. Radz said. "Because of the prep design, the veneer doesn't sit on the tooth like a crown, which slides itself into place. You have to see it fit into place, and that means you have to be meticulous about cleaning up the cement before you light cure the cement and ensure the veneer is fully seated."

Isolate, isolate, isolate. Proper isolation keeps contamination out, provides a dry field, and gives you a better view. Dr. McClintock recommends using rubber dams.

"If blood and saliva get on the tooth, it will affect the final bond strength of the veneers," Dr. Radz said. "Proper isolation during the entire cementation procedure is really important."

Apply the bonding agent properly. Some dentists don't give enough time for the chemical reaction to occur between the bonding agent and the tooth structure before moving on to the next step, Dr. Radz said. That could lead to big problems.

"Everything boils down to adhesion," Dr. Snyder said. "If you don't get the bonding agent to adhere to the tooth, that's where you have failure."

ADDITIONAL RESOURCES

