

TheraCal PT[®]

PULPOTOMIES. THE THERA WAY.



Rx Only



TheraCal PT[®]

Dual-Cured Resin Modified Calcium Silicate Pulpotomy Treatment

Pulpotomies the THERA way...

TheraCal PT is a biocompatible, dual-cured, resin-modified calcium silicate that is used to treat exposed pulp. TheraCal PT maintains tooth vitality by performing as a barrier and protectant of the dental pulpal complex.

TheraCal PT's calcium release properties and ability to generate an alkaline pH is optimal for use in deep cavity preparations. The dual-cure ability permits immediate placement of the restorative material.

TheraCal PT is primarily indicated for:

- **Pulpotomies:** TheraCal PT may be placed after the partial or full removal of the coronal pulp.

TheraCal PT can also be used for:

- **Pulp exposures** (direct pulp capping): TheraCal PT may be placed directly on pulp exposures after hemostasis is obtained.
- **Protective liner** (indirect pulp capping) or base under a variety of substrates.



Working Time:
45 seconds at 35°C
(minimum)



Setting Time:
5 minutes at 35°C
(maximum)



Time Saver:
Restore in 1
office visit



**UNIQUE
HYDROPHILIC
MATRIX**



Thera Benefits



The chemical formulation of TheraCal PT consists of synthetic Portland Cement calcium silicate particles in a hydrophilic matrix which facilitates **calcium release**.



TheraCal PT's **physical properties** resist breakdown and degradation leading to a durable seal.*



Alkaline pH
Alkaline pH promotes pulp vitality.¹

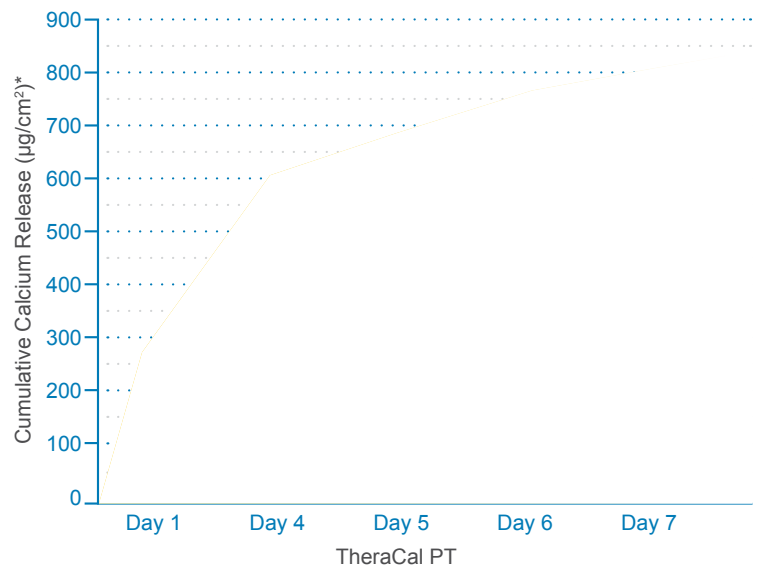


Moisture tolerant
Low water solubility.*



Easy Syringe Application
Unlike traditional MTA products, there is no mixing by hand. Easily and directly dispense TheraCal PT from the dual-barrel auto-mix syringe.

Cumulative Calcium Release

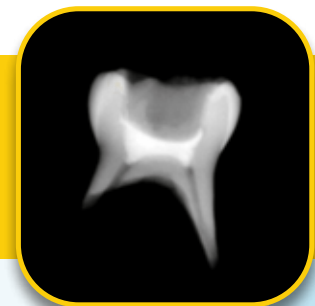


¹ T. Okabe, M. Sakamoto, H. Takeuchi, K. Matsushima. Effects of pH on Mineralization Ability of Human Dental Pulp Cells. Journal of Endodontics, Volume 32, Number 3, March 2006.

* Data on file.



Radiopacity
TheraCal PT is radiopaque, allowing for easy identification and differentiation from recurrent decay and other restorative materials.

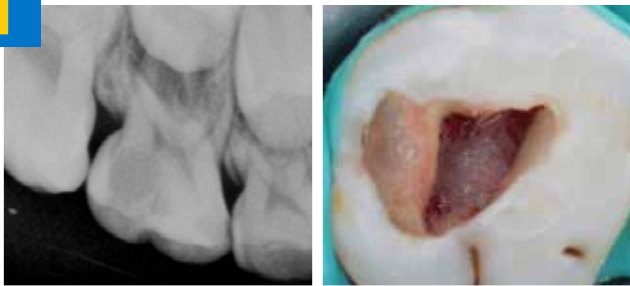


Pulpotomy Case

Pulpotomy with TheraCal PT in a primary molar

Dentistry courtesy of
Dr. Juan Carlos Hernández Cabanillas

1



X-Ray of radiographic diagnosis of pulpitis

Removal of coronal pulp and hemorrhage control

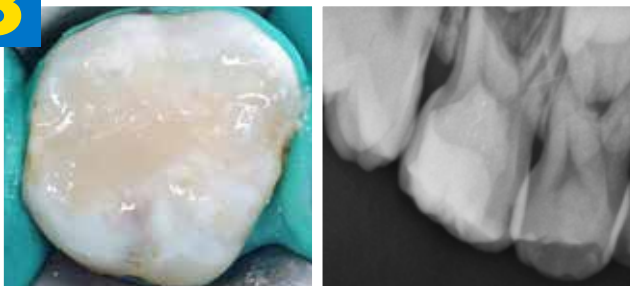
2



Application of TheraCal PT in the pulpal chamber

Polymerized TheraCal PT

3



Final composite restoration and post-operative radiograph

4



90-day clinical follow-up and radiograph

Ordering Information

TheraCal PT Single Syringe Pack **H-34110P**
1 Automix 4g Syringe TheraCal PT , Accessories, Instructions

TheraCal PT Dispensing Tips (30)..... **X-81270P**

1-800-247-3368



MC-2636PT



www.bisco.com